

Installation Guide

TELUS for the PC

TELUS National Version 4.0

A State-of-the-Art Transportation Information System for the 21st Century

[FHWA's "Priority Market-Ready Technology"](#)

Developed by

New Jersey Institute of Technology

With funding from

U.S. Department of Transportation,
Federal Highway Administration

January 2006
Revised March 2008

Table of Contents

Before You Install TELUS for the PC	4
Installing TELUS From the TELUS Installation CD-ROM.....	4
STEP 1: Run the installation program.....	4
STEP 2: Select the installation platform.....	5
STEP 3: Install Microsoft Access 2000 Runtime.....	7
STEP 4a: Install TELUS Standalone Application.....	9
STEP 4b: Install TELUS Network Server Application	12
STEP 4c: Install TELUS Network Client Application.....	14
STEP 5: Install MS Data Access 2.6	18
Installing TELUS With the Package Downloaded From the TELUS Website.....	19

Before You Install TELUS for the PC

WARNING: TELUS application *requires* Microsoft Access to be installed on each workstation and the server computer (in case of a network deployment). If Microsoft Access is not installed, you will need to install Microsoft Access 2000 Runtime prior to installing TELUS application. Microsoft Access 2000 Runtime is provided on the TELUS installation CD-ROM. Please note that using MS Access 2000 Runtime results in a slight loss of functionality of the TELUS application. Users of the runtime version cannot edit the pre-formatted reports in TELUS. However they can use the report wizard (discussed in TELUS User's Manual, Chapter 16, *Generating Reports*) to create new reports.

COMPATIBILITY: TELUS application is compatible with Microsoft Access 2000, XP, and 2003 versions.

NEW DEVELOPMENT: Microsoft Access 2007 users should contact TELUS technical support by e-mail at telus@njit.edu. We will give you a link to download a beta version of the Access 2007 compatible application.

Installing TELUS From the TELUS Installation CD-ROM

STEP 1: Run the installation program

To run the installation program:

1. Insert the *TELUS National v.4.0 Installation* CD into the CD-ROM drive on your PC.
2. Wait while the installation wizard is activated. *Install TELUS/TELUM Main Menu* screen (Figure 1) should automatically appear. If the installation wizard does not load automatically, please do the following:
 - From the Windows desktop, click "Start", then click "Run" from the menu

- In the “Run” dialog box, type your CD-ROM’s drive letter followed by a colon and backslash and type *INSTALL.EXE*. Example: *D:\INSTALL.EXE*. You can also click the “Browse” button to locate the *install.exe* file in the root directory of the installation CD-ROM.
 - Click “OK”. The installation wizard should start loading. Proceed to item 3.
3. Click “Install TELUS” button. Go to [STEP 2](#).

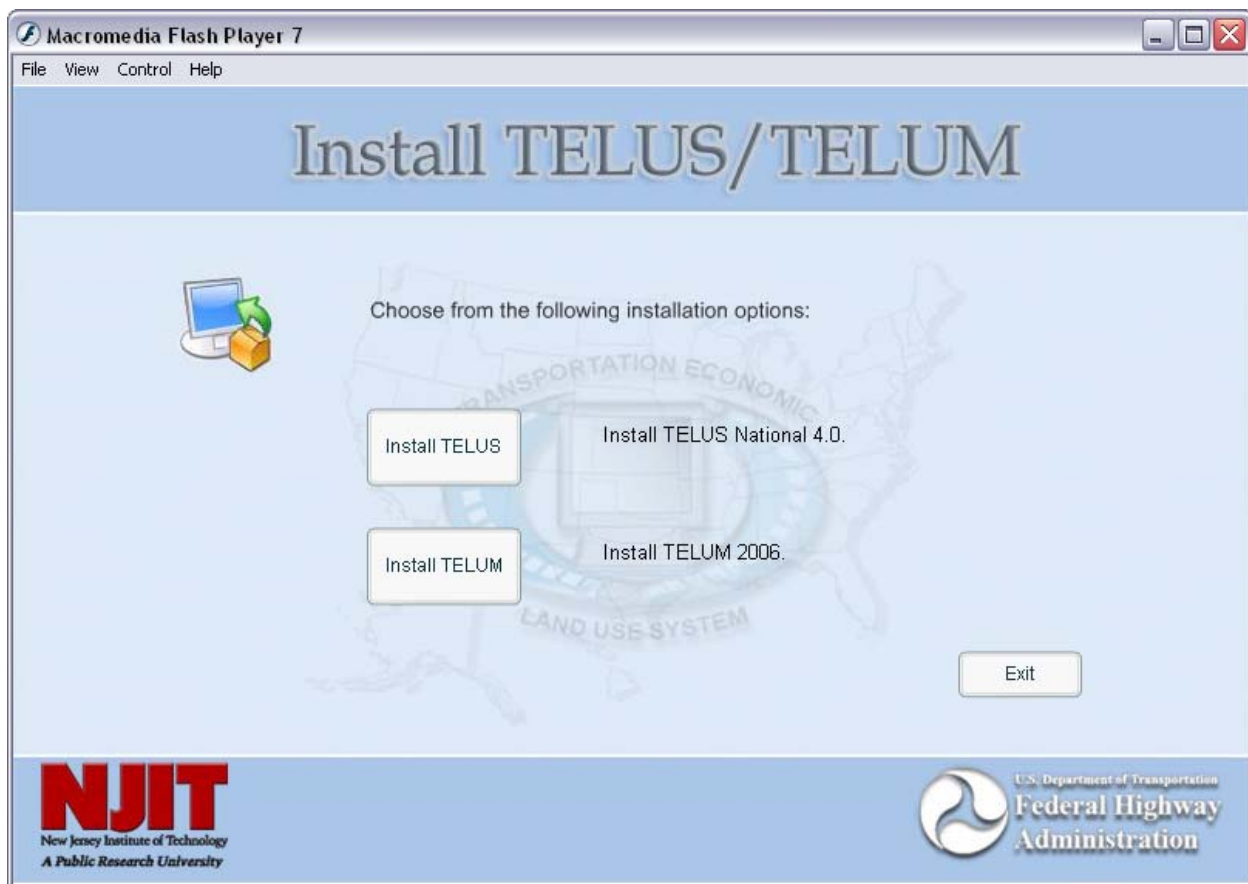


Figure 1: Install TELUS/TELMUM Main Menu screen

STEP 2: Select the installation platform

On the next screen, shown in Figure 2, you must select one option:

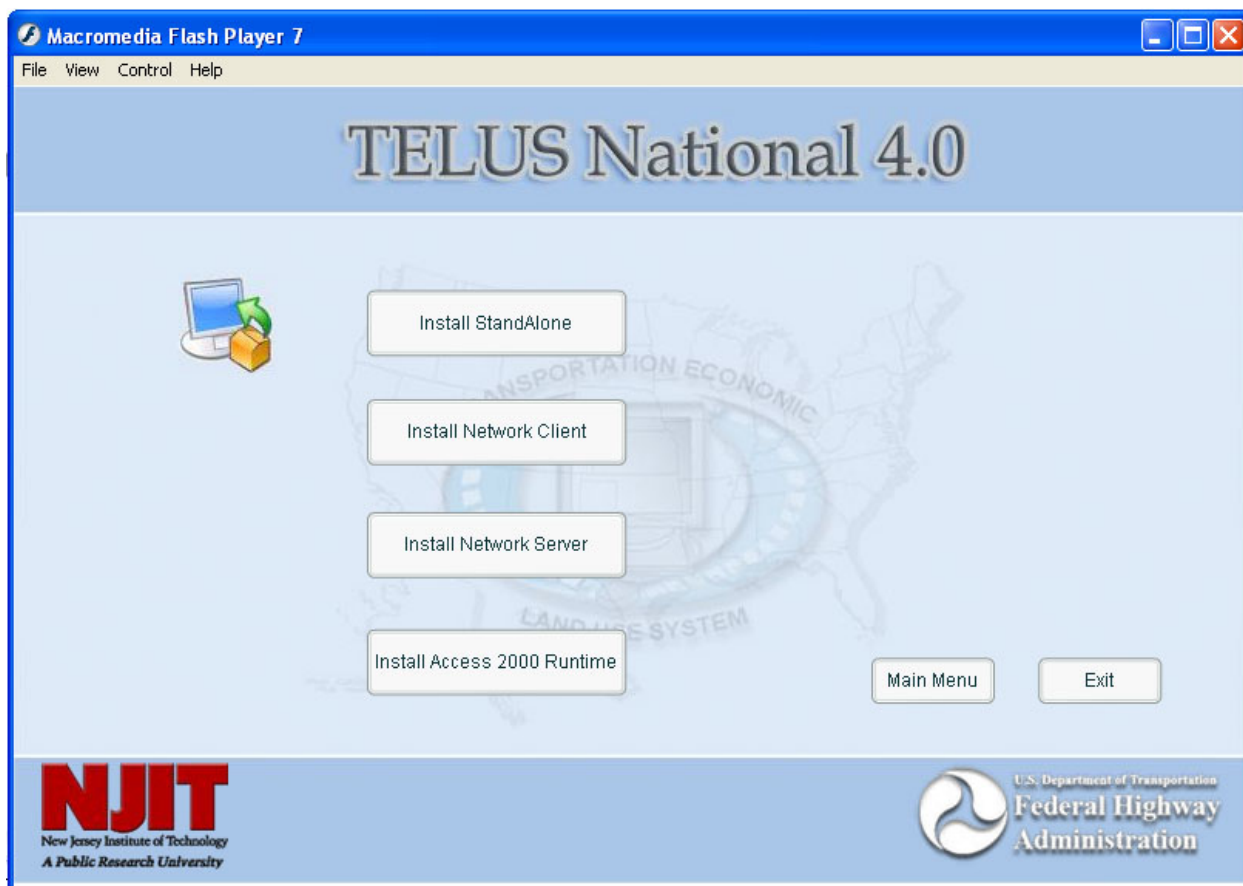


Figure 2: TELUS National 4.0 Installation Screen

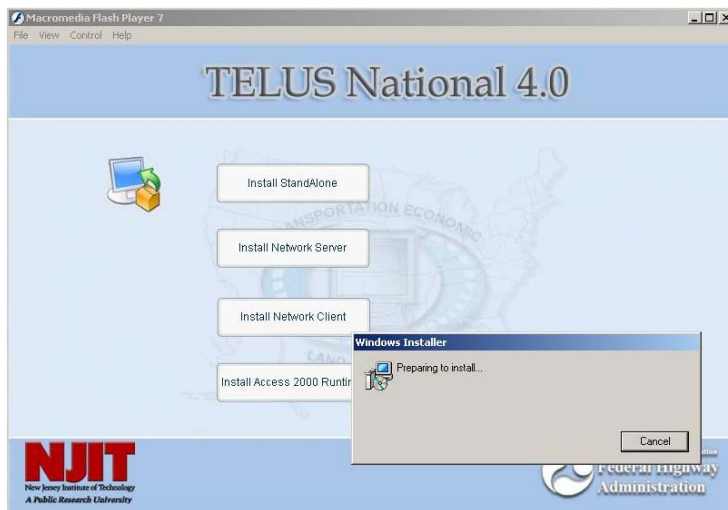
1. **Install Standalone:** Choose this option if the TIP data will be entered, stored, and managed on a single computer. TELUS and stored TIP data will be accessible on this computer only. Go to [STEP 4a](#) (page 9) and follow the instructions for installing TELUS Standalone application.
2. **Install Network Server:** Choose this option if the TIP data will be entered and managed by multiple staff members working on different workstations connected into a local area network (LAN). This will install the TIP database files on a central server of the LAN. The server files will only be installed on one central location and users will link to it through the LAN connections from their workstations. Go to [STEP 4b](#) (page 12) and follow the instructions for installing TELUS Network Server application.
3. **Install Network Client:** This installation needs to be used in conjunction with the Network Server. This will install the data input interface on the local client computers,

(i.e., PCs that will be accessing TIP data stored on the server through the LAN connection). The client files will need to be installed on every workstation that will run TELUS and will be linked to the server files via the LAN. Go to [STEP 4c](#) (page 14) and follow the instructions for installing TELUS Newtork Client application.

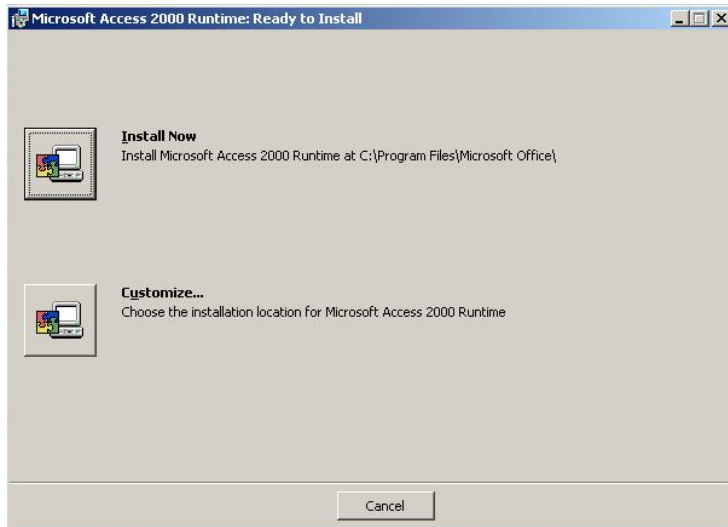
4. Install Access 2000 Runtime: This option installs the Microsoft Access 2000 runtime version on those PCs that do not have the full version of Microsoft Office or Microsoft Access 2000 or later versions. The TELUS functionality may be reduced slightly when running the runtime version of Microsoft Access, primarily in the domin of customizing reports. Go to [STEP 3](#) (page 7) and follow the instructions for installing Access 2000 Runtime.

STEP 3: Install Microsoft Access 2000 Runtime

From the TELUS National 4.0 Installation Screen, choose “Install Microsoft Access 2000 Runtime”.



- § The Windows Installer will initiate the Access 2000 Runtime installation program.



- § On the Installation Menu select “Install Now” by clicking on the button next to it.



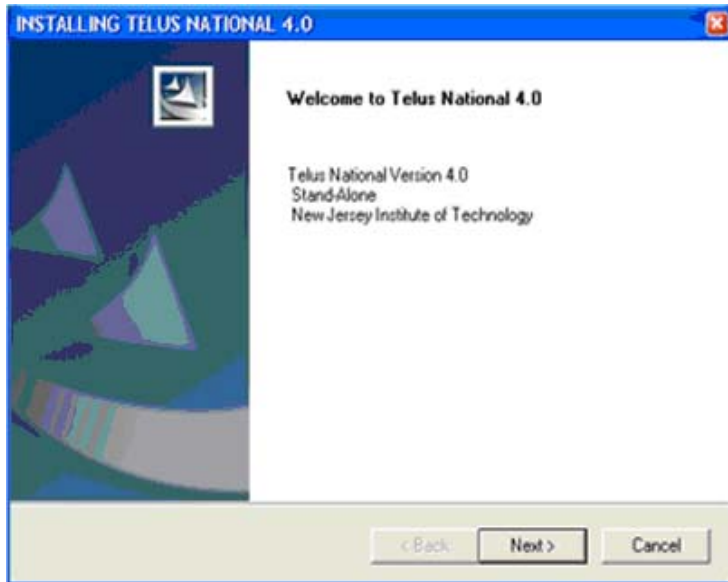
- § The installation will start and a progress bar will be displayed.
- § Please wait while the installation is in progress.



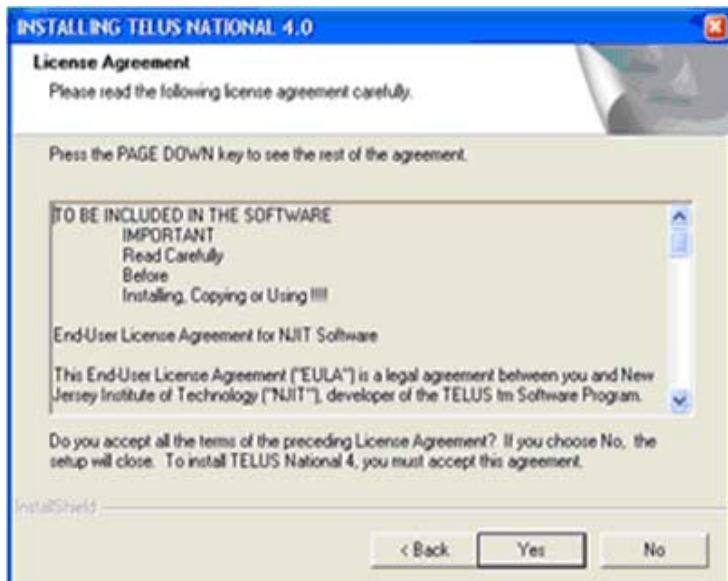
- § When the installation is completed the dialog box will appear on the screen.
- § Click “OK”
- § This concludes the installation.

STEP 4a: Install TELUS Standalone Application

From the TELUS National 4.0 Installation Screen, choose “Install Standalone”:

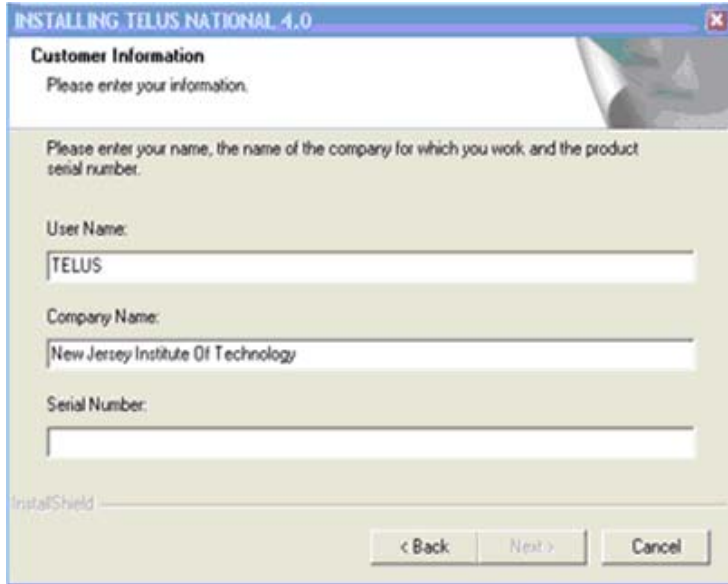


- § The Stand-Alone Installation Wizard will launch.
- § Click “Next” on the *Stand-Alone Welcome* screen.

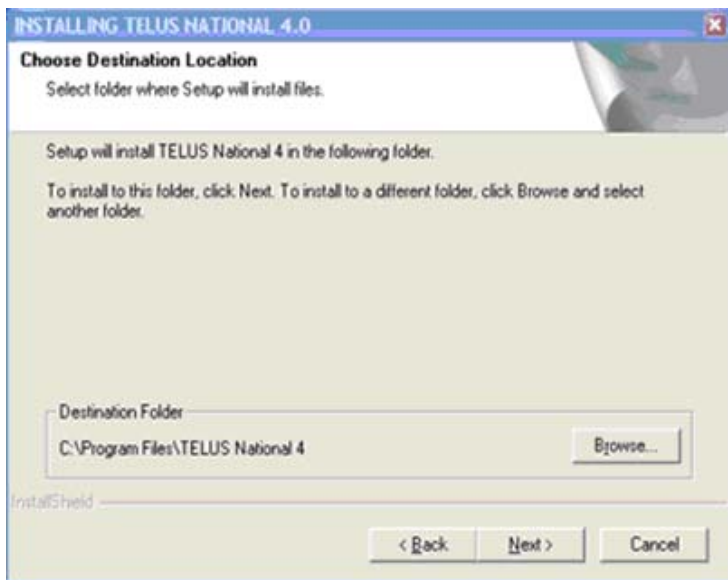


- § Click “Yes” to accept the Software License Agreement.

Installing TELUS National

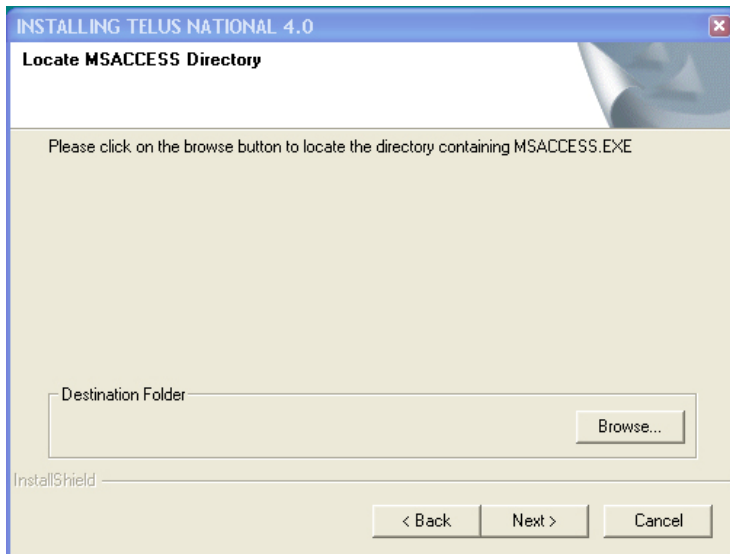


- § When prompted, enter a User Name, Company Name, and Serial Number.
- § The Serial Number is obtained by registering on the TELUS National website at: <http://www.telus-national.org/register/register.html>. TELUS version 4.0 users must register again to install version 4.0. We apologize for this inconvenience.

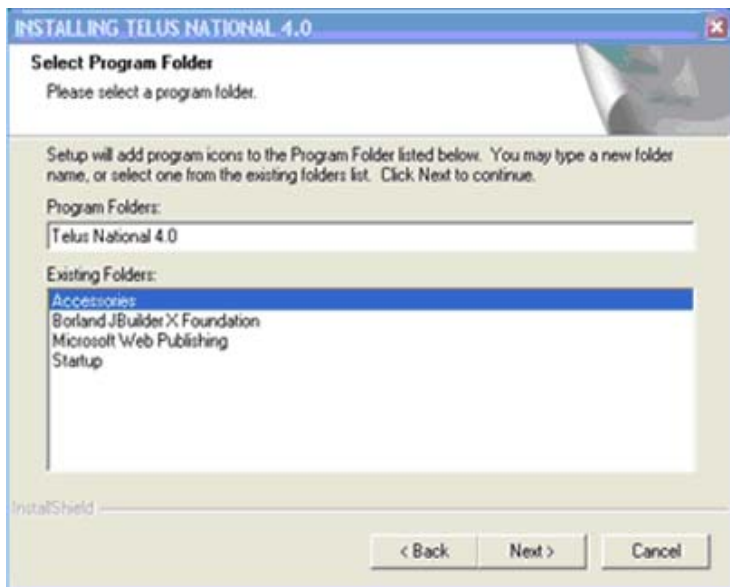


- § By default, the wizard installs TELUS application in the “C:\Program Files\Telus National 4” folder. You may change the location by clicking on the “Browse” button. Please write down the path of the installation directory for your records here:
-
-
-

- § Click “Next”.



- § The installation program locates the MS Access files. If the files are not found, the wizard will prompt you to locate the path of the location where “MS Access.exe” file is installed. If you are not sure of the path, use Windows Explorer to search for the file.
- § Click “Next”.

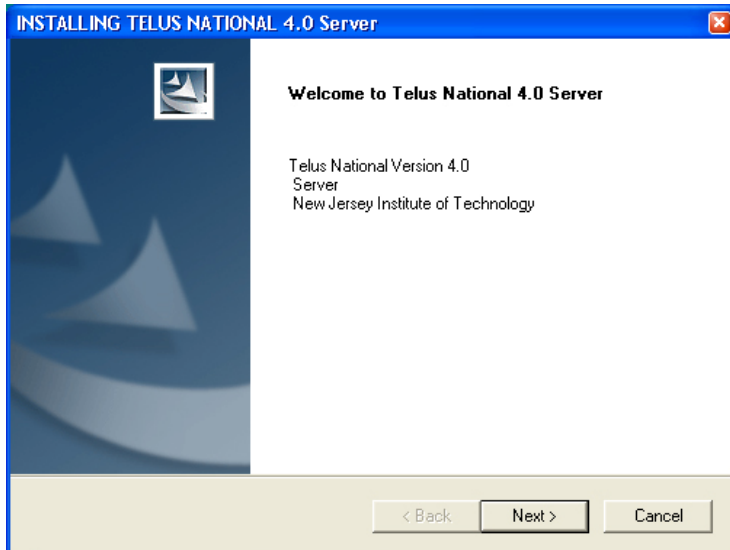


- § TELUS will add program icons to the Program Folder. You may type a new folder name or select one from the existing folders list.
- § Click “Next” to continue. The installation program will begin copying the TELUS files to your hard drive.

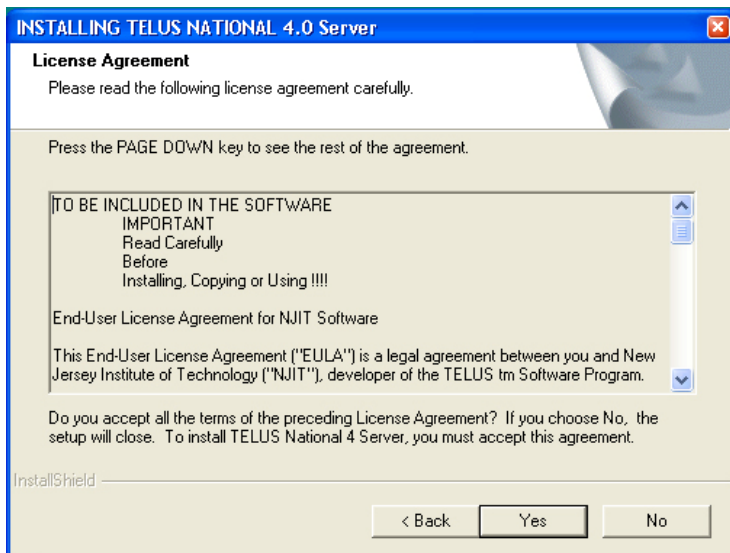
To complete the installation of TELUS you will need to install MS Data Access 2.6 as well. The installation wizard for MS Data Access 2.6 is launched immediately following the TELUS application installation. Please skip to [STEP 5](#) (page 18) for detailed installation instructions for MS Data Access 2.6.

STEP 4b: Install TELUS Network Server Application

Network Installation consists of two phases. The first phase installs the TIP data files on the server and will only need to be performed once. The second phase installs the interface files and must be repeated on each client computer. This step installs the TELUS Network Server application.



- § The Server Installation Wizard is launched after selecting "*Install Network Server*" on the TELUS National 4.0 Installation Screen.
- § Click "Next" on the *Network Server Welcome* screen.



- § Click "Yes" to accept the Software License Agreement.

Installing TELUS National

INSTALLING TELUS NATIONAL 4.0 Server

Customer Information
Please enter your information.

Please enter your name, the name of the company for which you work and the product serial number.

User Name:
TELUS

Company Name:
New Jersey Institute of Technology

Serial Number:

InstallShield

< Back Next > Cancel

- § When prompted, enter a User Name, Company Name and Serial Number.
- § The Serial Number is obtained by registering on the TELUS National website at: <http://www.telus-national.org/register/register.html>. TELUS version 4.0 users must register again to install version 4.0. We apologize for this inconvenience.

INSTALLING TELUS NATIONAL 4.0 Server

Choose Destination Location
Select folder where Setup will install files.

Setup will install TELUS National 4 Server in the following folder.

To install to this folder, click Next. To install to a different folder, click Browse and select another folder.

Destination Folder
C:\Program Files\TELUS National 4 Server Browse...

InstallShield

< Back Next > Cancel

- § By default, the wizard installs the TIP Database and other TELUS files in the “C:\Program Files\Telus National 4” folder. You may change the location by clicking on the “Browse” button. Please write down the path of the installation directory for your records here:
-
-
-

- § Click “Next”.

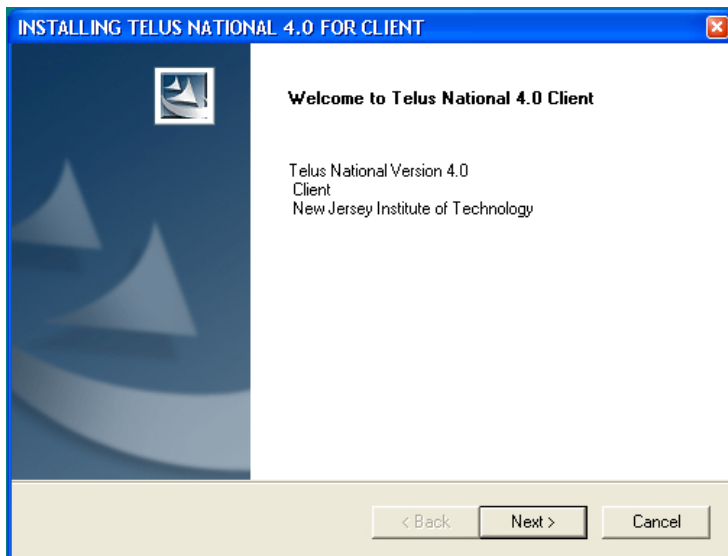
- § The Installation program will begin copying the TELUS files to your server's hard drive. Once the installation of server application is completed you can leave the installation program by clicking the "Exit" button on TELUS National 4.0 Installation Screen and "Exit" button on the Main Menu screen.

Important! The setup program copies the TIP database to a server location. Network administrator should make this location on the server accessible from all computers/workstations on the network that will require access to TELUS application and TIP Database.

The first phase of the network deployment is now completed.

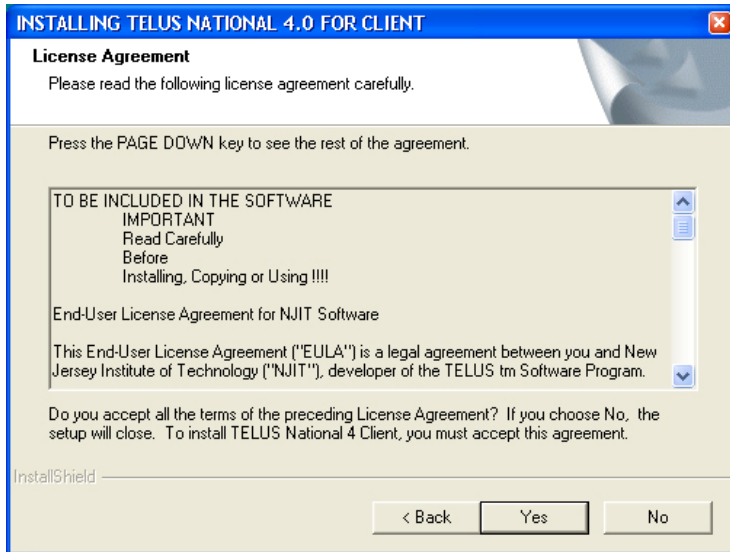
STEP 4c: Install TELUS Network Client Application

In this step we provide instructions for the second phase of network deployment – installing the TELUS Network Client application. From the TELUS National 4.0 Installation Screen, choose "Install Network Client".

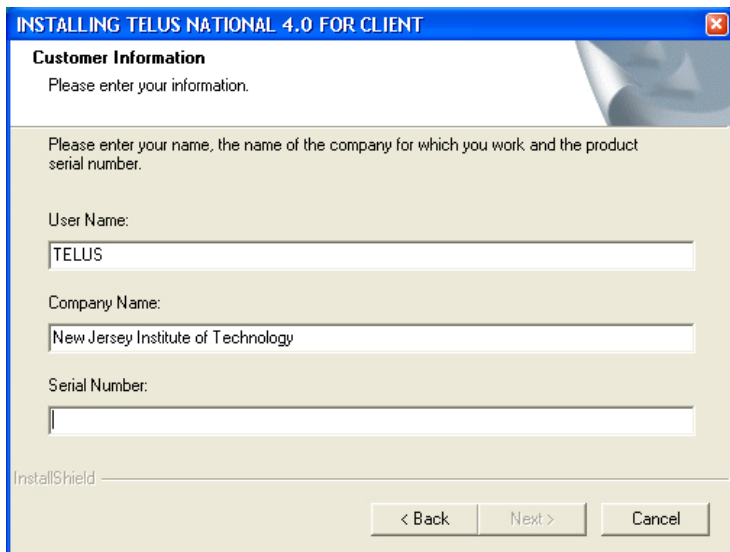


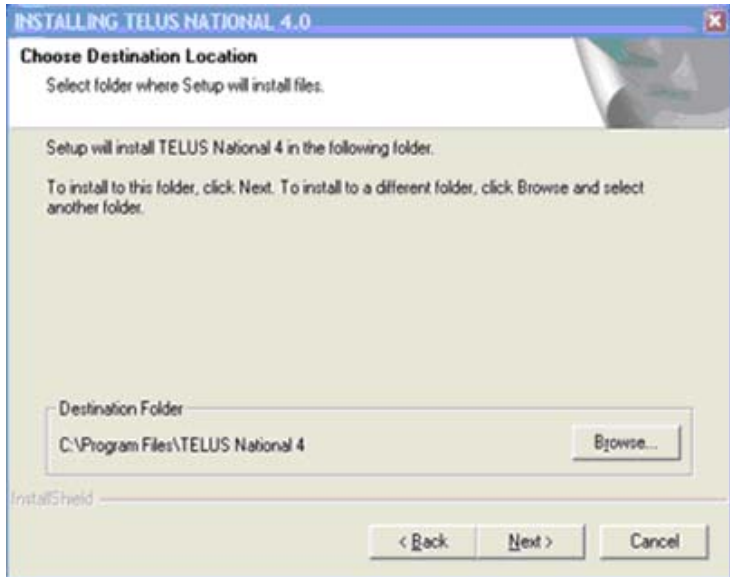
- § The Client Installation Wizard is launched
- § Click "Next" on the *Network Client Welcome* screen.

- § Click “Yes” to accept the Software License Agreement.



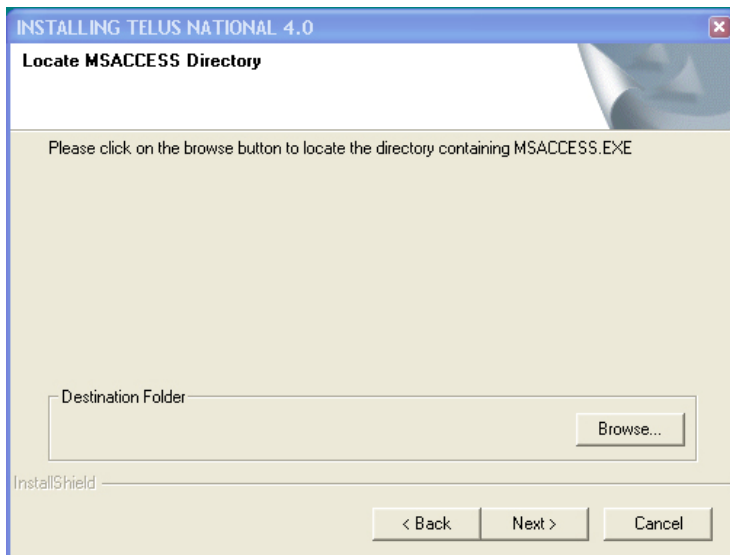
- § When prompted, enter a User Name, Company Name and Serial Number.
- § The serial number is the same as the one obtained for the Network Server application.



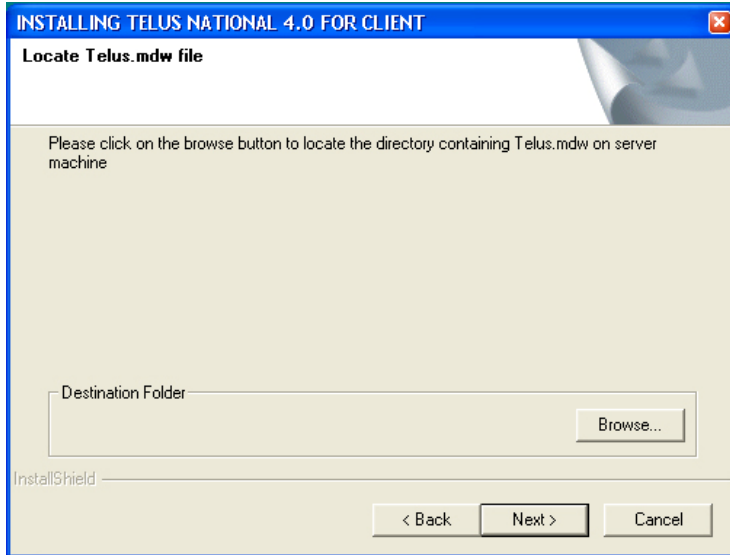


- § By default, the wizard installs the program in the “C:\Program Files\Telus National 4” folder. You may change the location by clicking on the “Browse” button. Please write down the path of the installation directory here:
-
-
-

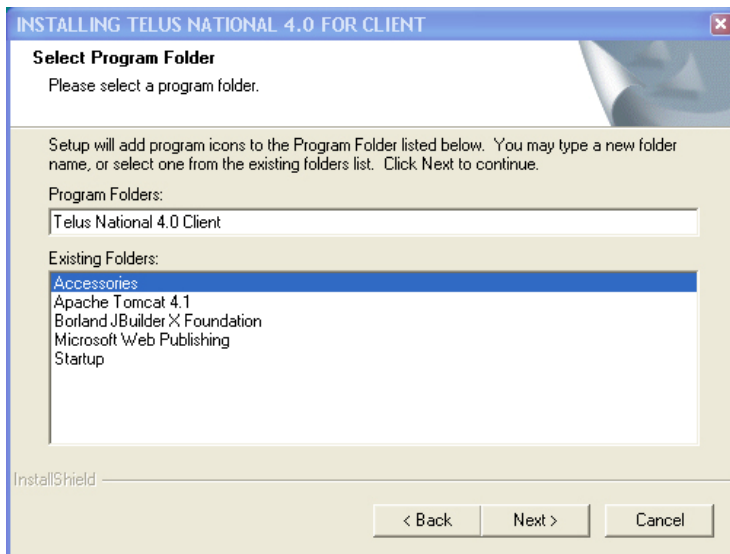
- § Click “Next”.



- § The installation program locates the MS Access files. If the files are not found, the wizard will prompt you to locate the path of the location where “MS Access.exe” file is installed. If you are not sure of the path, use Windows Explorer to search for the file.
- § Click “Next”.



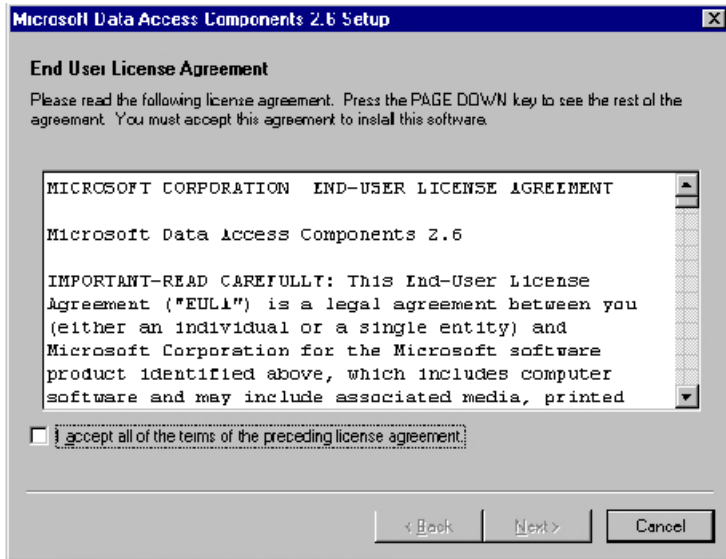
- § On this screen you need to locate the “TELUS.MDW” on the network server. Click the “Browse” button and locate the path to the directory containing “TELUS.mdw”. This file will be in the installation directory on the server (you have written down this path on page 13).



- § TELUS will add program icons to the Program Folder. You may type a new folder name or select one from the existing folders list. Click “Next” to continue.
- § The installation program will begin copying files to your hard drive.

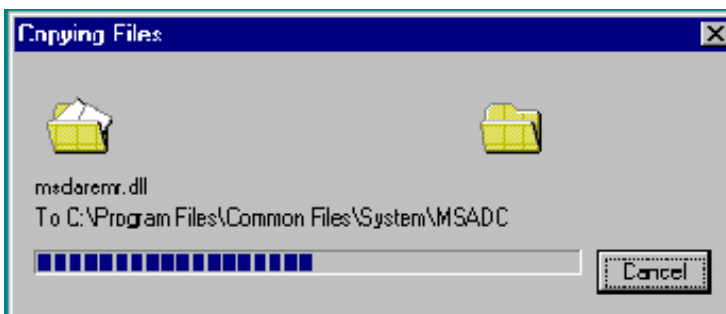
In order to complete the installation of TELUS you will need to install MS Data Access 2.6 on each client as well. The installation wizard for MS Data Access 2.6 is launched immediately following the TELUS application installation. Please go to [STEP 5](#) (page 18) for detailed installation instructions for MS Data Access 2.6.

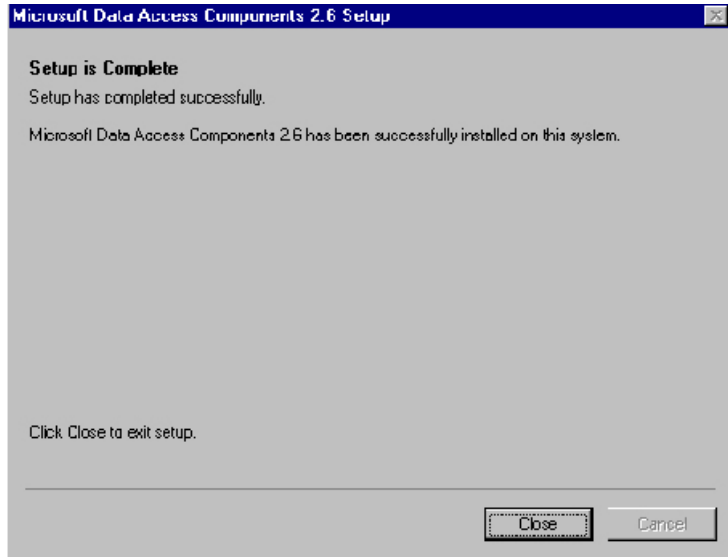
STEP 5: Install MS Data Access 2.6



- § After copying the TELUS files to your computer, the MS Data Access 2.6 installation begins automatically.
- § Check the box and click "Next" to accept the Microsoft Software License Agreement.
- § Setup will now check for in-use files. Click "Next" on the screen "Detecting in-use Files", if it appears.
- § Click "Finish" to complete the installation of all Data Access Components.

- § The installation program will begin copying files to your hard drive.





- § Click “Close” on completion of setup.
- § When the installation is completed, two shortcut icons entitled *Telus National 4.0 Client* and *Telus Help* will be placed on the desktop.

Installing TELUS With the Package Downloaded From the TELUS Website

Depending on the platform you wish to install, you will download one of the three .zip files: ***Standalone.zip***, ***Sever.zip***, or ***Client.zip***. Please unzip the downloaded file. After extracting the files on your local hard-drive, locate and double-click the file setup.exe, which will launch the *Welcome* screen.

Please go to [STEP 4a](#) on page 9 of this guide for installing a Standalone application.

Please go to [STEP 4b](#) on page 12 of this guide for installing a Network Server application.

Please go to [STEP 4c](#) on page 14 of this guide for installing a Network Client application.